

DENTSPLY

ChemFil[®] Molar

Fast Setting Glass Ionomer Restorative

C A P S



For Dental Use Only



Caution, Consult
Accompanying Documents



www.dentsply.de

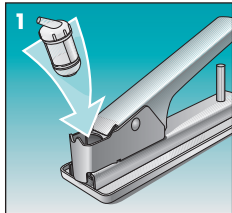
Consult Operating
Instructions

CE
0123

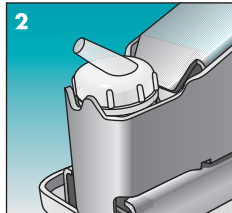
Manufacturer
DENTSPLY
DeTrey GmbH
78467 Konstanz
GERMANY

ACTIVATION

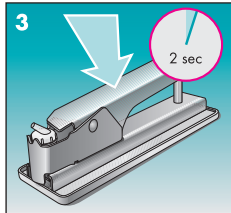
Insert the capsule in the activator with the cap upwards.



Make sure that the application cannula points away from the lever.

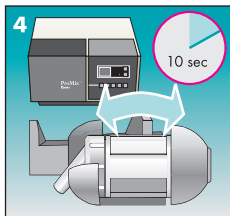


Press down the lever of the activator and hold down for 2 seconds.

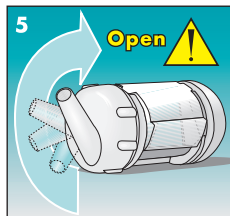


MIXING

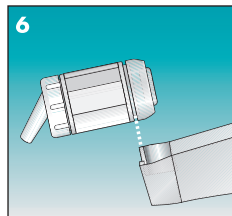
Mix the activated capsule for approximately 10 sec. Remove promptly.



Turn the twist cap by a half turn to the right (= 180°) until you notice a stop.

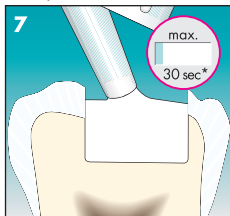


Insert the open capsule into the applicator. The capsule can be turned.

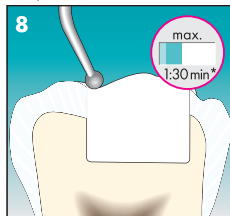


APPLICATION

Apply the material into the cavity within 30 seconds.



Bring the material into shape.



Adjust occlusal surface, finish and polish.



* After end of mixing