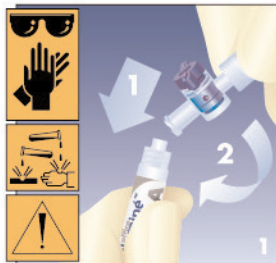
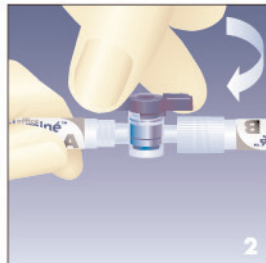


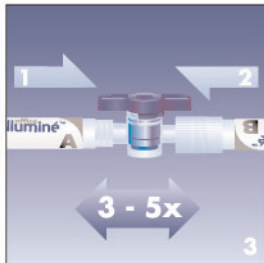
## In-Office Tooth Whitener. Professional Bleaching. Step by Step.



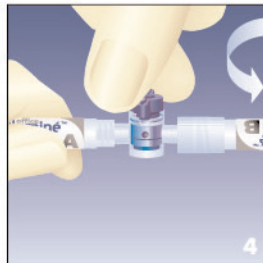
Always hold **syringe A upright**, remove cap and screw syringe B onto syringe A.



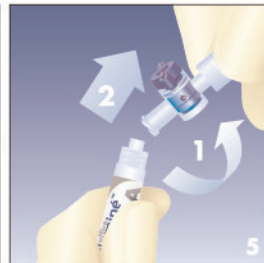
Turn valve to "on" position.



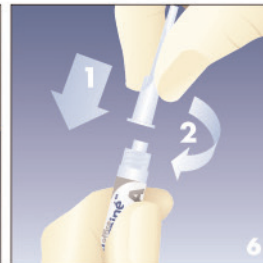
Mix from syringe A to syringe B 3 - 5 times. Mixed material must end in syringe A.



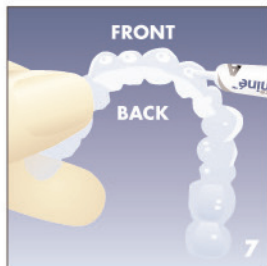
Turn valve to "off" position



Remove syringe B from the **upright** syringe A.



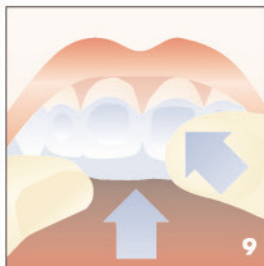
Connect applicator tip to **upright** syringe A.



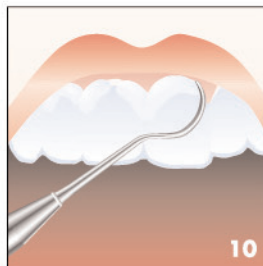
Extrude a small amount of material into each reservoir.



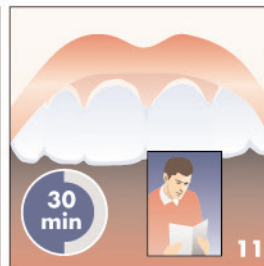
**Important:** Material must become semi-viscous.



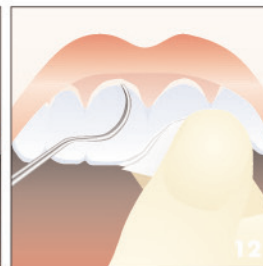
Upon required viscosity, seat the tray and press reservoirs.



Remove excess material with a scaler.



Let patient wait for 30 minutes.



Remove tray and clean teeth thoroughly.